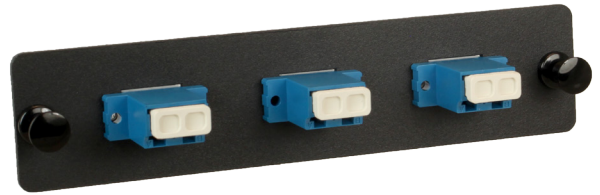


# Fiber Adapter Panel LC 6 Pack Duplex Single-Mode

Part Numbers:  
FE-F0806  
FE-6LC-SM (Made in USA)



## Dimensions

Depth	30.48 mm   1.20 in
Height	30.48 mm   1.20 in
Width	130.2 mm   5.125 in

## General Specification

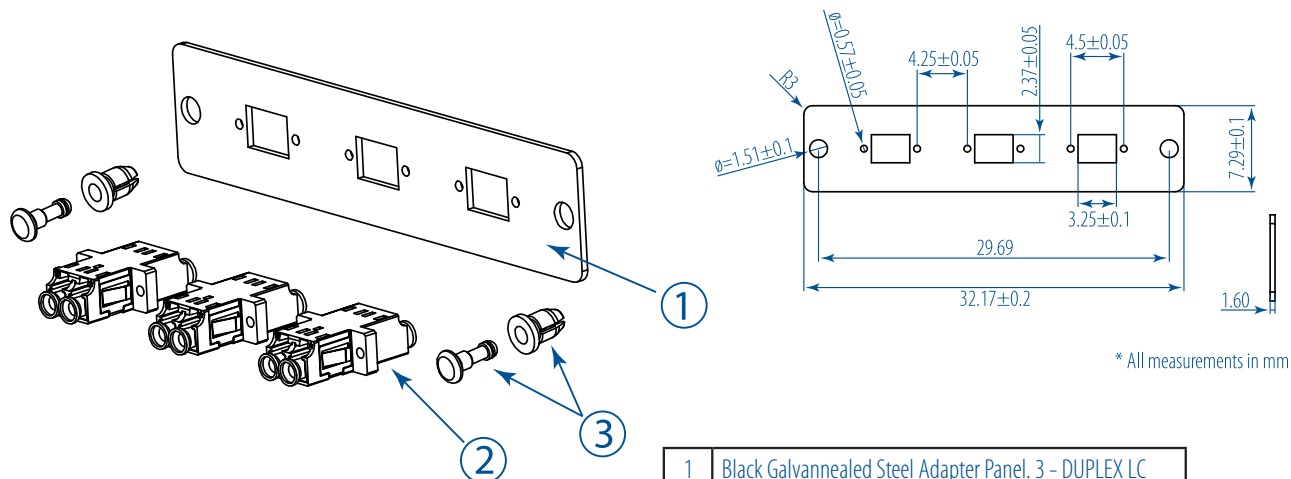
Product Type	Panel
Interface	LC
Body Style	Duplex
Adapters, Cutout Quantity	3
Adapters, Quantity	6
Mount Type	Rack Mount
Color	Satin Black

## Specification

Product Standard Certification	UL
RoHS 2002/95/EC	Compliant
ISO 9001:2008	

## Construction Materials

Material Type	Steel
Material	16AWG Steel (Corrosion-Resistant)
Coating	Electrostatic Polyester Powder Coat Rust-Resistant Finish
Adapters	Phosphor-Bronze Alignment Sleeves Zirconia Ceramic Alignment Sleeves



1	Black Galvannealed Steel Adapter Panel. 3 - DUPLEX LC
2	Ceramic Sleeve DUPLEX LC Adapter
3	Plastic Push Pin